

Enhancing the Emergency Care You Know and Trust

During these unforeseen times, Beverly Hospital's mission has never been more important. Amidst the greatest public health crisis of our lives, we have been deeply committed to caring for all who need us. The consistently high volume of our Emergency Department (ED) rivals that of many large academic medical centers in the region, with nearly 50,000 visits last year. To help us emerge from this pandemic stronger than ever, philanthropy is critical. Please join us to enhance the expert, compassionate care we provide our patients.



Behavioral Health Services in the Emergency Department at Beverly Hospital

Regardless of the circumstances, we continue to provide our North Shore communities with the highest level of care. New protocols were implemented during the pandemic to triage and treat patients, and we continue to extend compassionate support to the growing numbers of patients in need of behavioral and mental health care. An early adopter of best practices in this realm, our ED serves the most vulnerable populations, in a therapeutic environment where patients are expertly evaluated, treated, and either placed or discharged.

Just as your needs evolve, so will we. Looking ahead, we have developed a thoughtful plan to enhance the ED to enable our team to deliver care where it's needed most. With philanthropic investment from our closest supporters, we will upgrade our services to best serve our patients, today and always.

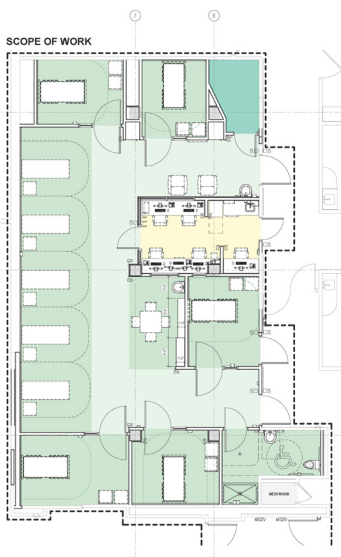
No matter your need, Beverly Hospital is here for you and your family.



Behavioral Health Pod

During the height of the pandemic, our hospital staff moved patients seeking emergency behavioral health care to an area outside the ED, and found patients benefited from being in a less confined space. Since then, we have continued to see an increase in behavioral health patients of all ages, especially children. Taking this into account, we redesigned and expanded the ED's Behavioral Health Pod services.

Staffed by behavioral health specialists, the new Behavioral Health Pod will increase our capacity from four to ten beds and provide an enhanced patient experience. This area has been thoughtfully designed with the help of caregivers and community members to incorporate therapeutic elements such as soothing wall colors and circadian lighting.



Rendering of renovated Behavioral Health Pod



Saul Cohen, MD Chair, Emergency Medicine

“The complete redesign and expansion of the Behavioral Health Pod at Beverly Hospital will help us become a state-of-the-art ED. This superior therapeutic environment is vital to our mission because it will facilitate the delivery of patient-centered care to those who are most vulnerable in our society, in a warm, welcoming milieu.”

Please Join Us

It is with the ongoing tireless efforts of our talented staff that we remain prepared to keep our community safe and healthy. Your generosity will help us to continue to meet the most pressing healthcare needs of our community.

Contact Us

For more information about how you can have an impact or to make a gift, please contact:

Liz Mullane

Director of Campaign Initiatives and Major Gifts

978-236-1627 | Liz.Mullane@lahey.org